



Karen Jennings Wilson

What will you fill your 5" x 7" Easter Egg with? Make a dozen in different colors and fill them with candy or toys! One hooping on your embroidery machine is all it takes. Use the ScanNCut to cut out the appliqué! This bag is very neatly finished with a colorful lining and no raw edges on the inside.

MATERIALS:

Stabilizer

Quilt Batting (low loft)

Yellow Nylon Zipper

Lining fabric (to match bag color)

Yellow Fabric

Green Cotton Fabric

Purple Cotton Fabric

Iron-On Fusible

Approx 1/2" wide ribbon or cording

1 piece medium cutaway to fit hoop

1 piece each of 6" x 2" Front Top

1 piece each of 6" x 6" Front Bottom

1 piece each of 6" x 8" Back
9" long

1 piece each of 7" x 3" Lining Top

1 piece each of 7" x 7" Lining Bottom

1 piece each of 7" x 9" Lining Back

1 piece each of 7" x 3" Front Top

1 piece each of 7" x 7" Front Bottom

1 piece each of 7" x 9" Back

1 piece each of 6" x 6"

1 piece each of 3" x 6"

2 pieces of 6" x 6"

2 pieces of 3" x 6"

1 piece 4" long

THREAD LIST: (FIG. "SEW ORDER")

Purple: Step 1-4, Zipper placement, lower zipper stitch, applique placement lines, satin stitching around middle stripe.

Green: Step 5, Satin stitching around lower stripe

Dark Green: Step 6, Leaves

Yellow: Step 7, Flowers

Purple: Step 8, Flower Centers

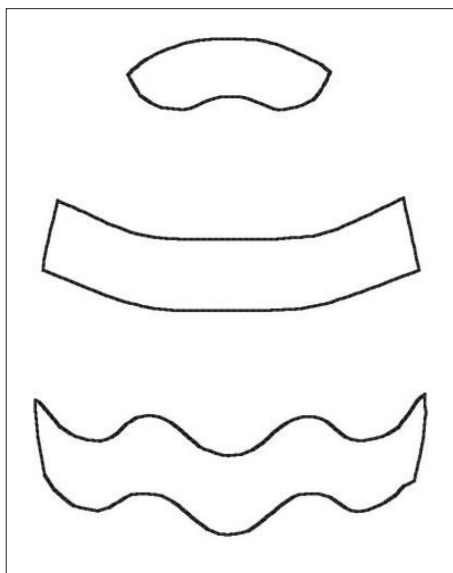
Green: Steps 9-13, Upper zipper stitch, applique placement line, satin stitching around applique, finishing the bag.

Helpful Tips:

- Read all the instructions completely before beginning. Then read each step again as you are proceeding.
- Do NOT use a metal zipper. (or you'll be sorry!) Use ONLY Nylon (not chunky plastic).
- Pay close attention to which side of your fabric is facing – up or down!
- When taping or pinning, be sure to keep tape and pins out of the stitching way!
- Keep your fabric taut, when you pin or tape.
- When it's time to open the zipper, DO NOT forget this step!
- The tearaway stabilizer is for use over the top of the batting to keep the machine's foot from hanging up in the batting. If you use a batting that is dense, and your foot glides easily over it, you may not need this stabilizer

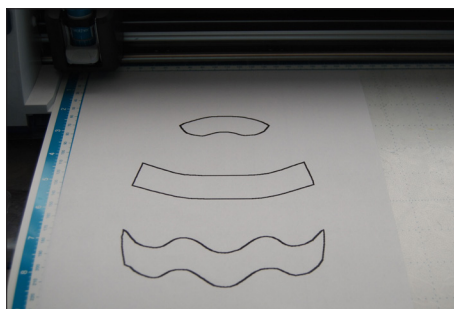
TO MAKE THE APPLIQUÉS

step 1. Print the PDF Images to actual size.



Note that the images are reversed from the actual appliqued bag. This is because you'll be cutting with the wrong side of the fabric facing up.

step 2. Place the printed image on the Standard Mat and press SCAN, and then Scan to Cut Data.



- step 3.** Then press the Scan Outline button. At this point, you can resize the cutting area, using the red arrows on the screen.



- step 4.** Press Save, and on the next screen, choose the ScanNCut picture. You'll see a message that says "Saved in the machine's memory", and a File Name. Make note of the file name.



Now press the Home button on the far left and the choose Pattern on the screen. Choose "Saved Data", and then the ScanNCut picture again. Find your saved pattern and press it.

You are now ready to prepare your fabrics and cut!

PREPARE YOUR FABRIC

- step 1.** On the ScanNCut, press the wrench button on the far left to show you the settings. Set the Cut Speed to 1, and the Cut Pressure to 5.



PREPARE YOUR FABRIC

step 2. The blade should be set at 4 or 4.5.



Note: Always perform a test cut before beginning project.

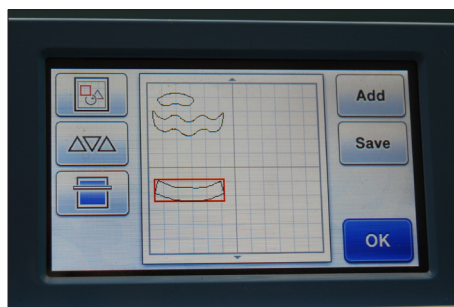
step 3. You'll be using your Low Tack Adhesive Mat, with the fabric support adhered to it. Iron the adhesive backing onto the backs of the appliqué fabrics.

Position the fabrics, fabric side down, on your prepared mat. Load the mat into the machine and press OK.

Note: Operation manual suggests using the standard mat with the high tack fabric support sheet.

step 4. At this point, you can drag the separate images on the screen around to position them just where you want them to cut on your mat. Be sure that if your fabric is in the upper left corner of the mat, your image should be in the upper left corner of the screen, as well.

Press OK, and Cut, and Start. When it's finished cutting, remove the paper backing from the back of the appliques.



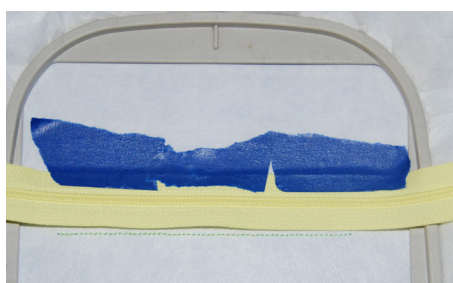
TO MAKE THE BAG

STITCH 1: Purple Thread

Hoop your Stabilizer in your hoop and Stitch out the first sewing step. These are the placement lines for the zipper.

Remove hoop from machine, but DO NOT unhoop your stabilizer.

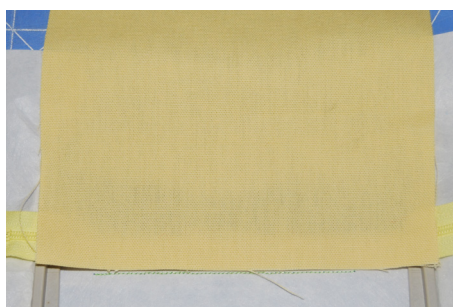
- step 1.** Lay your closed nylon zipper face up, between these lines, with the zipper pull to the left. Both ends of the zipper should be hanging off the sides of the hoop. Tape the zipper in place.



- step 2.** Turn your hoop over so you're looking at the back, and lay the Lining Bottom on the back side of the stabilizer, right side towards the stabilizer. The bottom edge of the lining will align with the lower zipper placement line. Tape or pin in place.



- step 3.** Turn your hoop over to the front. On the front side of the hoop, lay the Front Bottom fabric, right side towards the stabilizer, in the same position as the lining is, aligned with the lower zipper placement line. Pin or tape in place.



TO MAKE THE BAG

STITCH 2

Return hoop to machine, and stitch out the next step. This secures the lower half of the zipper.

step 4. Place the Front Bottom piece of batting on the stabilizer below the zipper, and fold down the fabric over the top of the batting. Be sure the fabric is taut. Pin in place. *On the back, Leave the lining as it is – do not fold it down, yet.



step 5. STITCH 3

Stitch the next step, which are the appliqué placement lines for the Easter Egg stripes.

Place the appliqué fabric pieces within the placement lines and press with an iron to adhere them to the fabric.



step 6. STITCH 4

Stitch the next step, which is the satin stitching for the middle stripe.

STITCH 5: Green Thread

Stitch the next step, which are the satin stitching for the lower zigzag stripe.

STITCH 7: YELLOW Thread

Stitch the next step, which are the flowers.

STITCH 8: PURPLE Thread

Stitch the next step, which are the flower centers.



- step 7.** Turn hoop over to the back.
Fold the Lining Bottom down and pin or tape into place.



- step 8.** On the front, lay the Front Top fabric, right side towards the stabilizer, with the long edge lining up with the edge of the zipper.
Pin/tape into place.



- step 9.** Turn the hoop over and, looking at the back, lay the Lining Top fabric, right side towards the stabilizer, with the long edge lining up with the edge of the zipper.
Pin/tape into place.



step 10. **STITCH 9: GREEN Thread**

Stitch the next step, which secures the top edge of the zipper.

Remove hoop from machine. Lay the smallest batting piece on the stabilizer above the zipper and fold the Front Top fabric up to the top of the hoop. Pin in place.

*Do not fold up the lining, yet.



step 11. **STITCH 10:**

Sew the next step, which is the placement line for the uppermost stripe applique. Iron on the applique within the placement line.



step 12. **STITCH 11:**

Stitch the next step which is the satin around the uppermost stripe.

Turn the hoop over to the back. Fold the upper lining up to the top of the hoop and pin or tape in place.



step 13. Turn hoop over to the front.

At this time you need to OPEN YOUR ZIPPER 2/3 of the way.

Also, fold your 1/2" x 4" ribbon piece in half, forming a loop, and tape the raw edges into place along the top edge of your hoop, with the looped end touching the zipper, and center the ribbon.



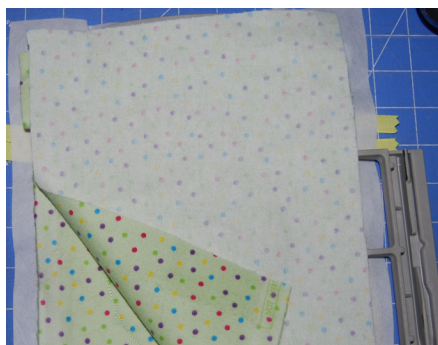
step 14. On the front side of the hoop, lay the Back fabric right side down inside the hoop. Next, lay the largest batting on top of that. Next, lay the tearaway stabilizer on top of that. Pin into place.



step 15. **STITCH 12:**

Return hoop to machine, and sew out the next step, which sews completely around the whole design.

Remove hoop from machine and turn it over, so you're looking at the back. Lay the Lining Back piece, right towards the stabilizer, and tape or pin into place.



STITCH 13:

Return it to the machine. Stitch out the last step. This stitches almost all the way around the design, leaving a little space open for turning.

Remove from hoop, Trim the edges to 1/4".

(VERY IMPORTANT) Clip the corners and curves!

Turn the bag right side out through the opening.

Hand-Stitch the opening closed.

With scissors, remove the stabilizer at the zipper area. Since the zipper is open, you can now turn your bag right side out. Enjoy your new bag! :)



Download the free .PES embroidery design:

<http://www.brother-usa.com/VirData/Content/en-us/HAD/FreeDesigns/HolidayGreetings/Project3EasterEgg.pes>

